

Welcome to

# Bracknell HealthSpace

Right Care, Right Place

---

## A new beginning for Bracknell

A new health complex for Bracknell town centre has moved a step nearer. NHS Berkshire East has identified the company it wants to work with to develop detailed plans for the Bracknell 'HealthSpace'.

## Healthcare for all

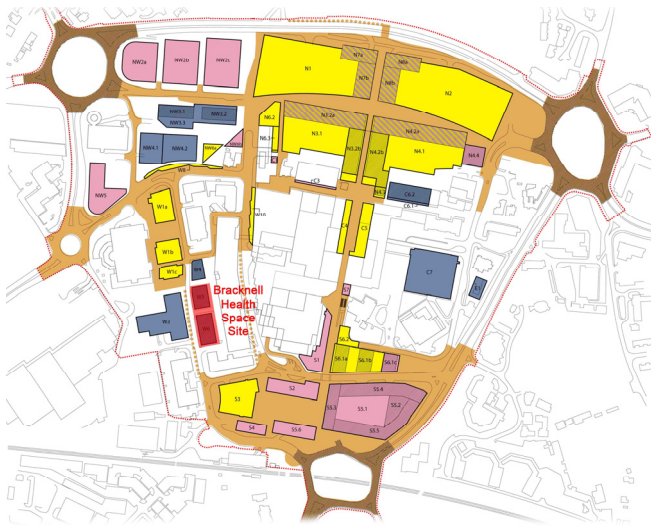
Demand for a new health facility in the centre of Bracknell offering an extended range of health services was one of the key themes to emerge from the local public consultation process known as Right Care, Right Place which finished last year. A consortium of G4S Integrated Services/ Ashley House was selected by the Board of NHS Berkshire East at its meeting in public on 23 April. Ashley House will now take on the status of 'preferred provider'. Work will now focus on the content and location of the building.

## Services to meet the needs of the community

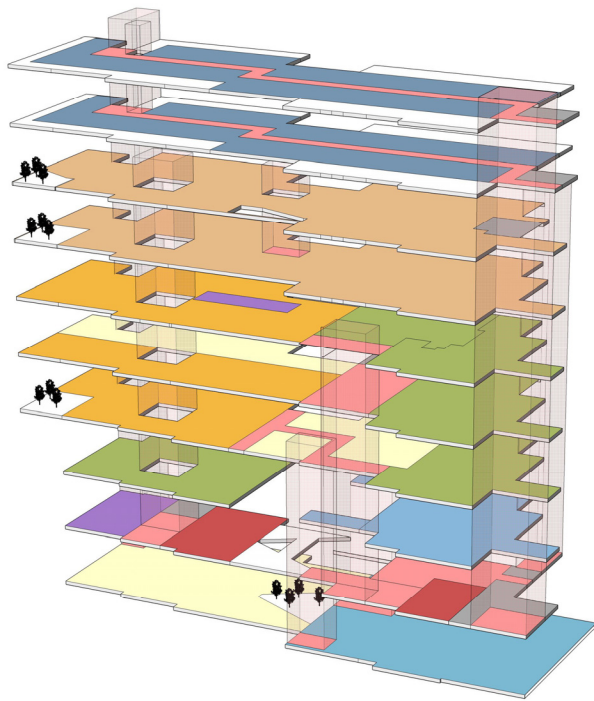
The HealthSpace will bring a wide range of services closer to home for many people. These will include urgent care, GP services, physiotherapy, specialist appointments with visiting hospital consultants and a whole range of scans and other diagnostic tests.





NHS Berkshire East Chairman Sally Kemp said: "This is a real milestone in our plans to offer an extended range of health services from 21st century facilities in the heart of Bracknell."





Pictured above - The Bracknell Masterplan



- |   |  |
|---|--|
|  Residential |  Cancer Centre        |
|  Care Home   |  Retail               |
|  Medical     |  Expansion            |
|  Medical     |  Shared / Circulation |
|  Medical     |  Plant                |

Pictured above - How the inside of the HealthSpace could look

Sir William Wells  
(Chairman, Ashley House plc) said;

*'This is a very important and exciting project both for the NHS in their delivery of their Right Care Right Place policy and as a catalyst for the regeneration programme of Bracknell town centre.'*

*'We are grateful and delighted to have been selected and look forward to working with the NHS and various user groups in achieving a flagship building and a beacon for health and social care provision'.*



Ashley House plc is a leading provider of Primary Healthcare premises solutions. A national organisation and recognised innovator with over 200 completed projects since 1991.



G4S Integrated Services supports the efficient delivery of front line services in critical environments for national and local government agencies and the private sector. It manages people, premises, information and equipment, working in partnership with customers to deliver innovation and maximum value for money in facilities management, logistics, business support, medical services as well as PFI contract and financial management.

## Contact details

Mary Purnell  
Assistant Director, Locality Development  
NHS Berkshire East  
01753 636176  
07786 623442

Eloise Armstrong  
Project Support Co-ordinator  
Berkshire Shared Services  
Mob : 07901 948 664

Peter Juster  
Development Manager  
Ashley House plc  
Direct Line: 01628 600354 (Bucks office)  
Direct Line: 0203 170 0823 (London office)